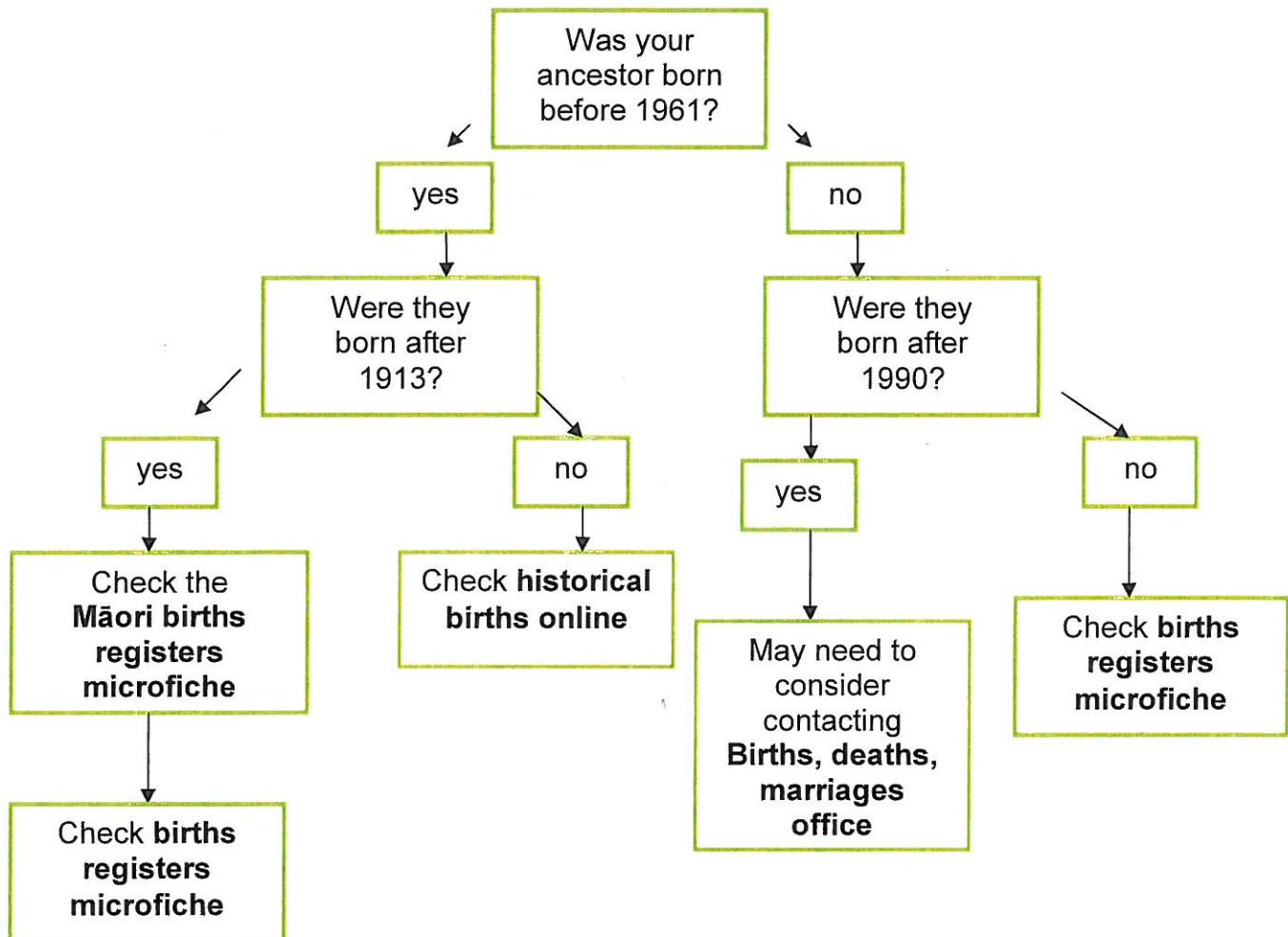


Whakapapa Research – Births



Māori Birth registers microfiche are located in the Family History Centre at Central Library Peterborough. They are arranged by year of birth and then alphabetically by surname

Birth registers microfiche are located in the Family History Centre at Central Library Peterborough. They are arranged by year of birth and then alphabetically by surname

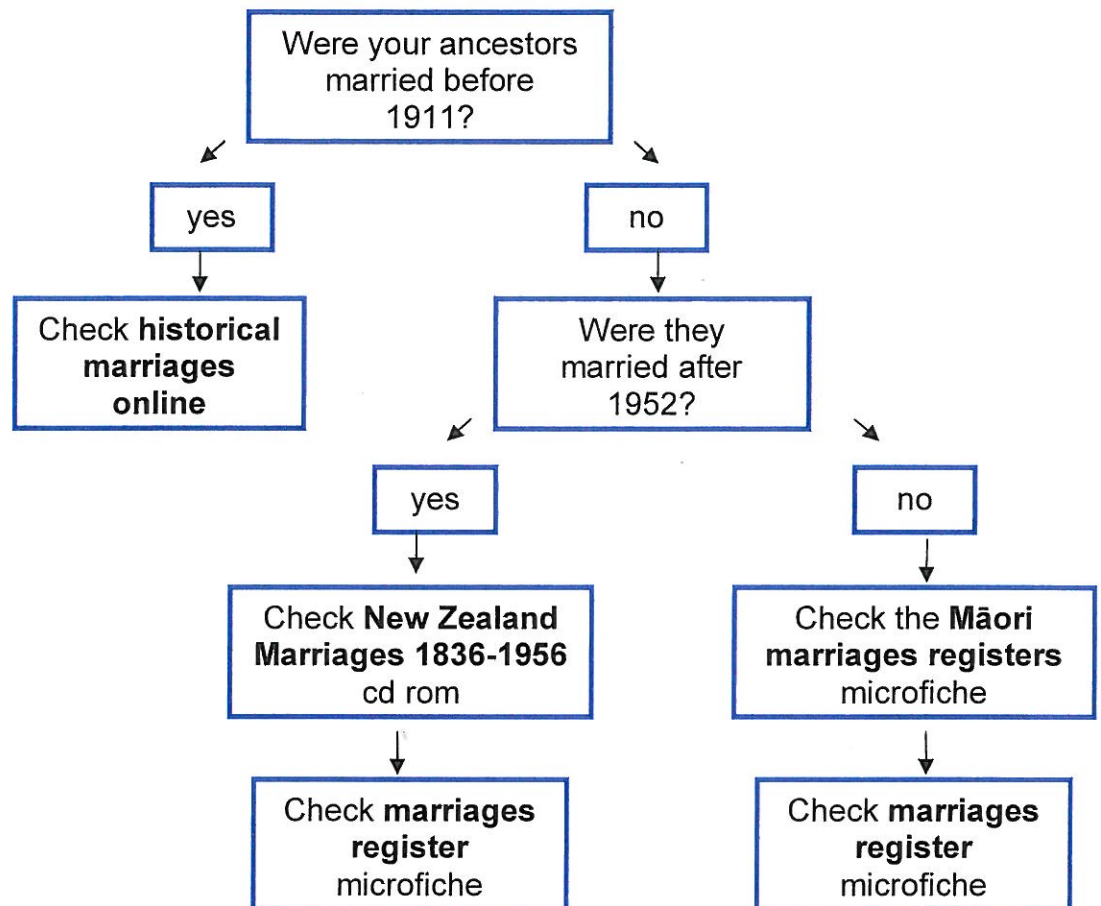
Historical births online are on the BDM website
<https://www.bdmhistoricalrecords.dia.govt.nz/Home/>

Births, deaths marriages <http://www.dia.govt.nz/Births-deaths-and-marriages>

Other resources:

Church Registers – these cards are held in the drawers on the back wall of the Family History area. They are filed alphabetically by surname, with details of baptisms, marriages and funerals. Useful if your ancestors were born/from Christchurch.

Whakapapa Research – Marriage



Marriages register microfiche are located in the Family History Centre at Central Library Peterborough. They are arranged by year of marriage and then alphabetically by surname.

Māori marriages register microfiche are located in the Family History Centre at Central Library Peterborough. They are arranged by year of marriage and then alphabetically by surname.

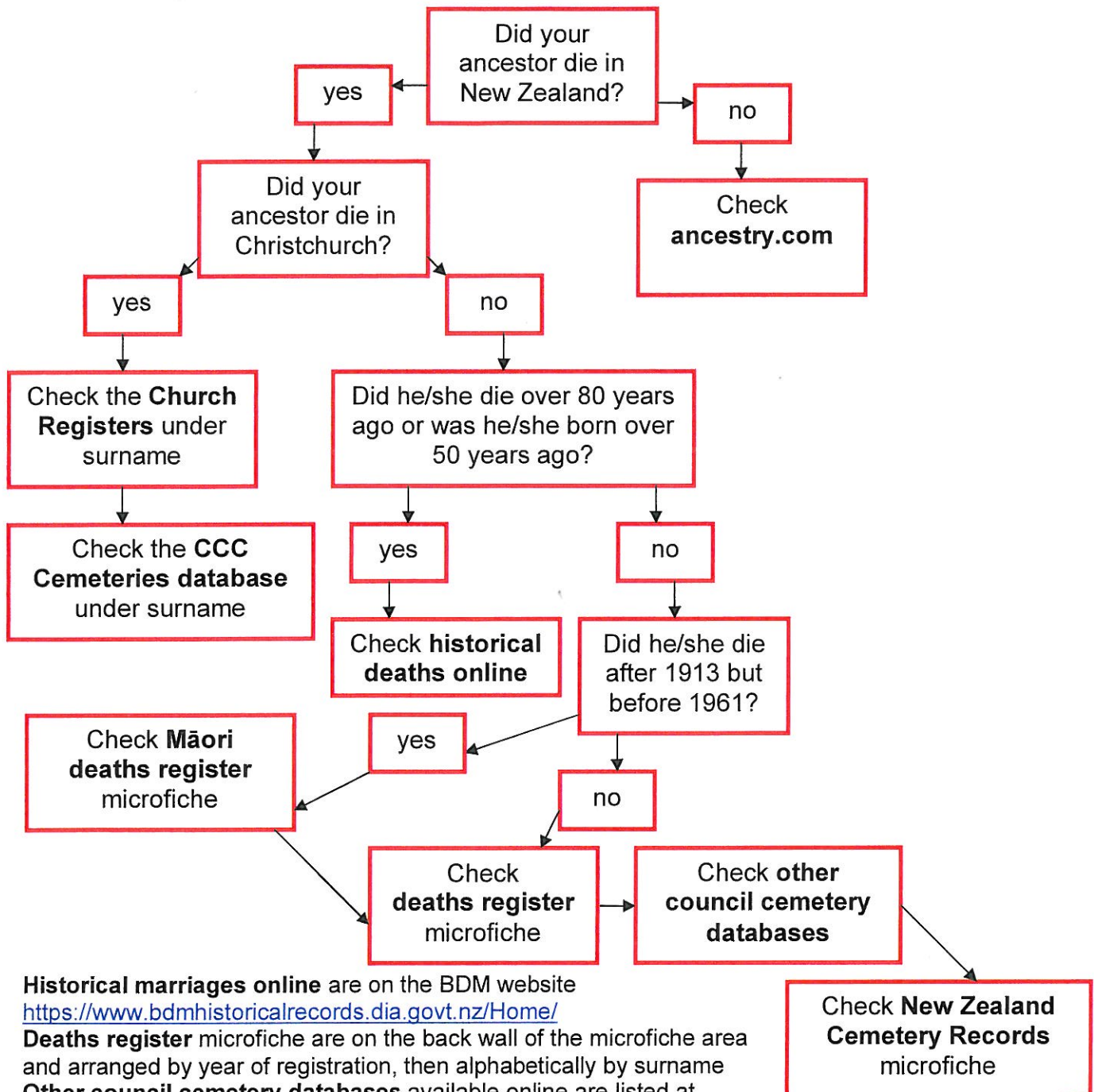
Historical marriages online are on the BDM website
<https://www.bdmhistoricalrecords.dia.govt.nz/Home/>

New Zealand Marriages 1836-1956 This CD-Rom is accessible on the Family History PCs at Central Library Peterborough, Central Library Tuam, Upper Riccarton and Fendalton libraries.

Other resources:

Church Registers – these cards are held in the drawers on the back wall of the Family History Centre at Central Library Peterborough. They are filed alphabetically by surname, with details of baptisms, marriages and funerals. Useful if your ancestors resided in Christchurch.

Whakapapa Research – Deaths



Historical marriages online are on the BDM website

<https://www.bdmhistoricalrecords.dia.govt.nz/Home/>

Deaths register microfiche are on the back wall of the microfiche area and arranged by year of registration, then alphabetically by surname

Other council cemetery databases available online are listed at

<http://christchurchcitylibraries.com/Resources/NewZealand/History/FamilyHistory/Cemeteries/index.asp>

New Zealand Cemetery Records microfiche are on the back wall of the microfiche area. Use in conjunction with *New Zealand Cemetery Records: a list of holdings*

Ancestry.com is available on any library public pc. You will need a log-in to use a computer

Church Registers – these cards are held in the drawers on the back wall of the Family History area. They are filed alphabetically by surname, with details of baptisms, marriages and funerals.

Māori deaths register microfiche are on the back wall of the microfiche area and arranged by year of registration, then alphabetically by surname.